



Annual Report  
2017

The middle section of the page has a light green background. A dark teal horizontal bar is positioned on the left side of this section. The text "Annual Report" and "2017" is located on the right side of this section.

Because everyone matters.

The bottom section of the page has a dark teal background. The text "Because everyone matters." is centered in this section.

# 2016-2017 Donors as of September 30, 2017

Synod Community Services would like to thank all those individuals and organizations who provided support during the 2016-2017 Fiscal Year.

David & Jacqueline Mente  
Rae Ann Anderson Weymouth  
Tim Belch  
David DeVarti  
Keisha Duvall  
Natasha Duvall  
Food Gatherers

Ramon Haygood  
Ed Maki-Schramm  
Julie Mehelas  
Heather Mooney  
Jeff Scanlon  
Tom Stachler  
Theodore White

Planned gifts to SCS can be made through bequests, trusts, charitable gift annuities, life insurance, personal property, real estate and retirement plan assets. As a 501(c)3 not for profit agency, gifts to Synod Community Services are fully tax deductible in accordance with IRS regulations. A letter will be provided acknowledging all donations.

# Financial Information

## Statement of Activities

October 1, 2016 - September 30, 2017

### REVENUE

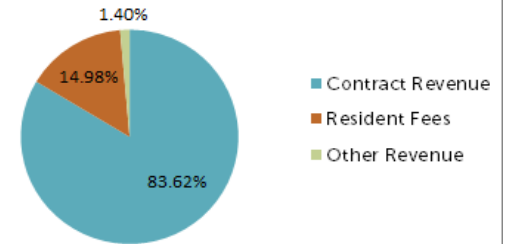
Contract Revenue	\$4,591,016
Resident Fees and Fees Paid on Behalf of Residents	\$822,322
Other Revenue	\$77,040
Total Operating Revenue and Support	\$5,490,378

### EXPENSES

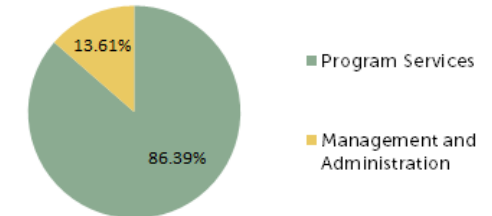
Program Services	\$4,766,188
Management and General Administration	\$750,857
Total Operating Expenses	\$5,517,045

Net Assets - beginning of the fiscal year	\$2,464,428
Net Assets - end of the fiscal year	\$2,420,297
Change in Net Assets	(\$44,131)

### Revenue FY 2016-2017

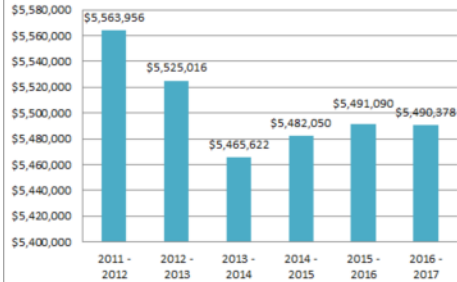


### Expenses FY 2016-2017

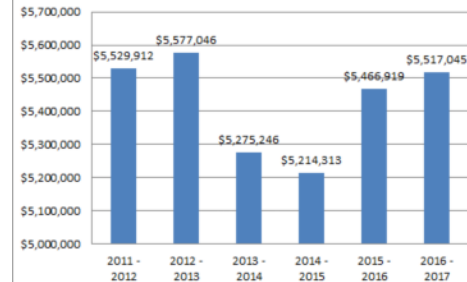


# Long-Term Trends

**Total Revenue FY 2012 - 2017**

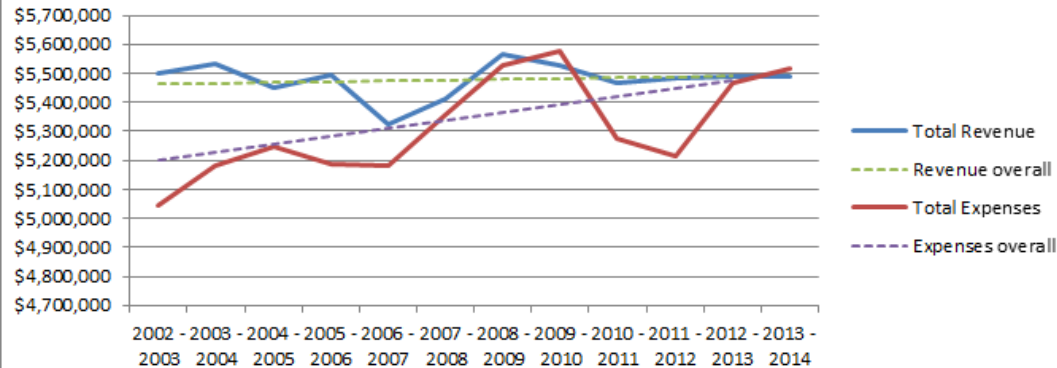


**Total Expenses FY 2012 - 2017**



While revenue has remained stable our expenses continue to increase, despite reductions in cost beginning in 2011-2012.

**Revenue vs. Expenses FY 2003 - 2017**



## Board of Directors

Edward Maki-Schramm  
President

Dr. Edwin Tobes  
Vice President

Heather Mooney  
Secretary

Michael McSurely  
Treasurer

Jennifer Van Daele  
Director

Cheryl Herba  
Director

Steven Holda  
Director

Rachael Holmes  
Director

Jack LaPan III  
Director

Bryan McNamara  
Director

## Executive Officers

Keta Cowan  
Chief Executive Officer

Laurie Lutomski  
Director of Programs

Pamela Bell  
Chief Financial Officer

## Administrators

Keisha Duvall  
Supervisor

Dana Leahy  
Supervisor

Laura Salo  
Supervisor

## Contact Us

Administrative Offices  
615 S. Mansfield  
Ypsilanti, MI 48197

Phone: 734-483-9363  
Fax: 734-483-9577

Mailing Address  
P.O. Box 980465  
Ypsilanti, MI 48198

[www.synodhelps.org](http://www.synodhelps.org)